

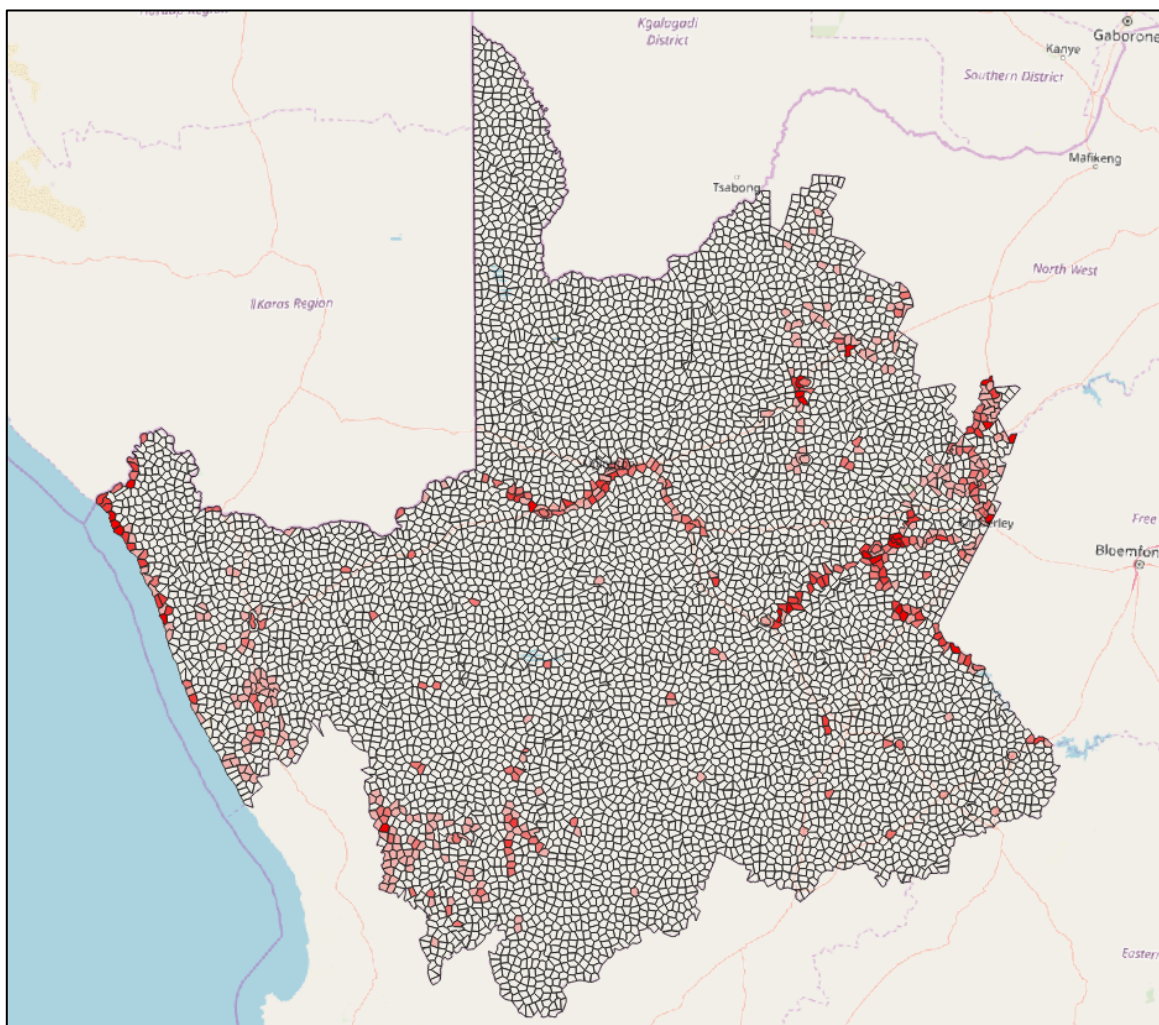
Disaster Management Plan for the Northern Cape Province

The Department: Cooperative Governance, Human Settlements and Traditional Affairs, Northern Cape Province, appointed **SRK Consulting** to develop a Provincial Disaster Management Plan for the Northern Cape Province.

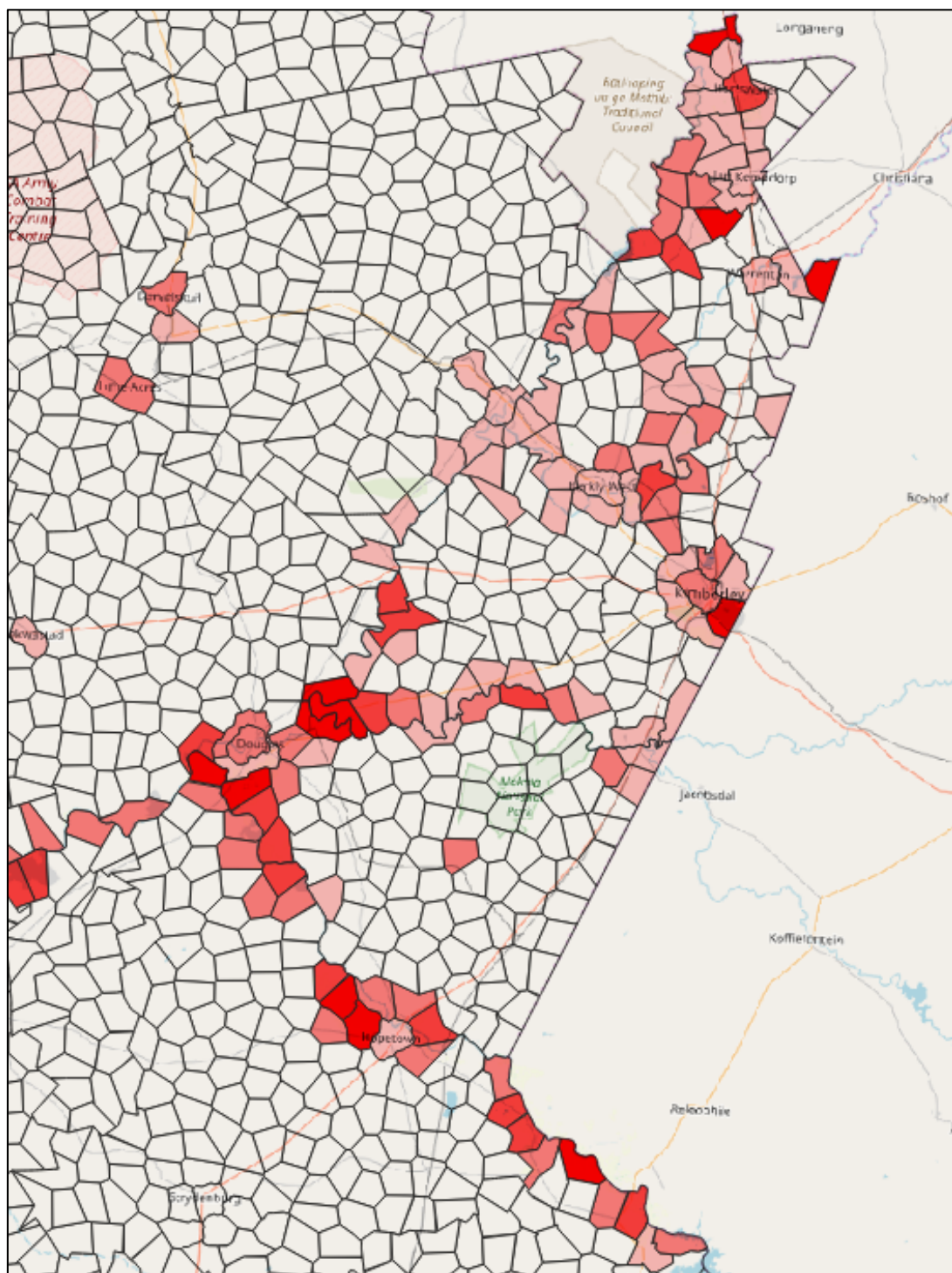
One of the core activities of the project is to perform a **disaster risk assessment** and Geographic Information Science (GIS) will be used extensively in this process to determine high disaster risk areas in the Northern Cape. Information from this study will be combined and validated with indigenous knowledge, gathered through workshops, to map and prioritize the final set of disaster risk areas.

Mesozone data created by CSIR (http://stepsa.org/socio_econ.html#Geospatial) was selected as the spatial data that will represent the spatial distribution of hazards and vulnerability on provincial level. This method will enable to project team to compare hazard information with vulnerability and resilience indicators such as population density and economic activities to determine disaster risk.

The figure (draft) below shows the Mesozones for Northern Cape representing areas where water pollution **can** occur (draft). Mining, agricultural and human activities were used as indicators for water pollution and areas where these indicators intersect with waterbodies, were identified. The information were then transferred to the overlapped mesozones and classified accordingly.



The next figure shows the area around Kimberley displaying the same information as discussed above. Dark red areas indicating a higher probability of pollution.



For more information contact Martin Stols (MStols@srk.co.za)