

Background Information Document

Integrated environmental authorisation process for Anglo American Platinum – Rustenburg
Platinum Mines Limited's Der Brochen Mine Amendment Project, Limpopo

PURPOSE OF DOCUMENT

Provides interested and affected parties with information about the proposed amendment project and its components, the regulatory process and how to become involved in the process.

Invitation to comment and register as an Interested and Affected Party

You are invited to register as an interested and affected party (I&AP) for the Der Brochen Amendment Project's integrated environmental authorisation process, comment or raise any issues of concern. Please complete the enclosed Registration and Comment Form and return to:
APIWE-ZONA DOTWANA
SRK Consulting
Stakeholder Engagement Office
P. O. Box 55291
Northlands
2116

CONTACT DETAILS:

Tel: (011) 441 6105
Fax: 086 503 6825
E-mail: adotwana@srk.co.za



ANGLO AMERICAN PLATINUM'S DER BROCHEN AMENDMENT PROJECT

DMR Reference Number **LP 30/5/1/3/2/1(182)EM**

 **srk** consulting

Introduction

The Der Brochen Mine is a platinum project owned by Rustenburg Platinum Mines Limited (RPM), a wholly owned subsidiary of Anglo American Platinum (AAP), and is located approximately 25 km south-west of the town of Steelpoort and 40 km west of Mashishing (Lydenburg), in the Limpopo Province. The mine falls within the Fetakgomo Tubatse Local Municipality, under jurisdiction of the Greater Sekhukhune District Municipality.

It is the intention of RPM to amend the Der Brochen Mine's approved Environmental Management Programme (EMPr) and associated Environmental Authorisation (EA) as well as updating their existing Water Use Licence (WUL) to include the following:

- The development of a buttress wall at the existing Helena Tailing Storage Facility (TSF) as well as the development of an additional filter press plant at the existing Mototolo Concentrator Plant, under emergency circumstances, as agreed by the Department of Mineral Resources (DMR) in October 2017;
- The updated topsoil management plan of the Der Brochen Mine;
- The development and operation of the following additional mining related infrastructure as part of the mine's development strategy:
 - Two new decline shafts (North and South shafts) to access new underground mining operation areas to be mined through the bord-and-pillar mining method. RPM intends to locate the North decline shaft within the previously approved footprint of the North Open Pit area, and the South decline shaft within the previously approved South Open Pit area;
 - Six up-cast ventilation shafts (three ventilation shafts per new decline shafts);
 - A central ventilation area will service both proposed decline shafts;
 - A Dense Medium Separation (DMS) Plant within the existing Mototolo Concentrator area;
 - A DMS Stockpile area and associated pollution control dam;
 - An additional Chrome Plant within the existing Mototolo Concentrator area;
 - Additional Run of Mine stockpiles and silos;
 - Change houses and office complex to be located at each of the decline shafts;
 - An explosive destruction bay area to be located near the proposed South decline shaft;
 - Additional linear infrastructure, i.e. conveyor systems, access and haul roads; and
 - Staff accommodation facilities to be located near the Der Brochen Dam.

Please refer to Figure 1 for the location of the proposed infrastructure in relation to the nearest towns and roads in the region.

Der Brochen Amendment Project

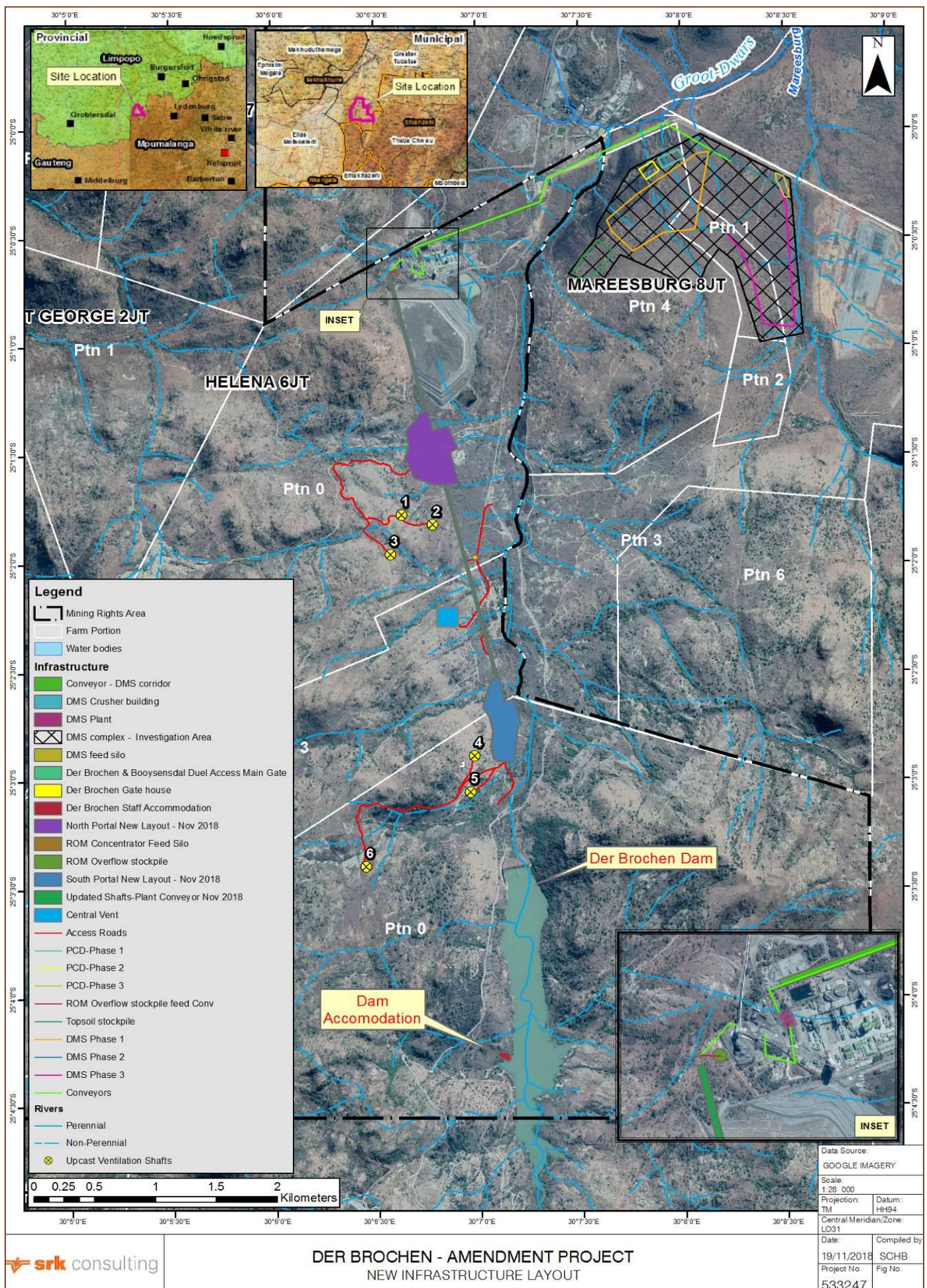


Figure 1: Regional locality map of the Der Brochen Amendment Project

Who is Anglo American Platinum?

Anglo American Platinum Limited is the world's leading primary producer of platinum group metals (PGMs) and accounts for about 40% of the world's newly mined platinum. The Company is listed on the JSE Limited and has its headquarters in Johannesburg, South Africa.

Der Brochen Amendment Project



Background

The Der Brochen Mine's mining right (Figure 2) falls on the following farms:

- Richmond 370 KT (Remaining extent, portions 1 and 2);
- St George 2 JT (Remaining extent, portions 1 and 2);
- Hermansdal 3 JT (Remaining extent);
- Hebron 5 JT (Remaining extent and portion 1);
- Helena 6 JT (Remaining extent and portion 3); and
- Der Brochen 7 JT (Remaining extent).

In addition to the above-mentioned farms, RPM also holds the surface right to Portion 7 of the farm Mareesburg 8 JT on which the Mareesburg tailings storage facility (TSF), associated return water dams (RWDs) and tailings-return water pipeline are located. This forms part of the existing Der Brochen Mine operation.

The following activities and infrastructure are associated with the Der Brochen Mine, as authorised through the Der Brochen Mine's approved Environmental Management Programmes (EMPrs) and current Water Use Licences (WULs):

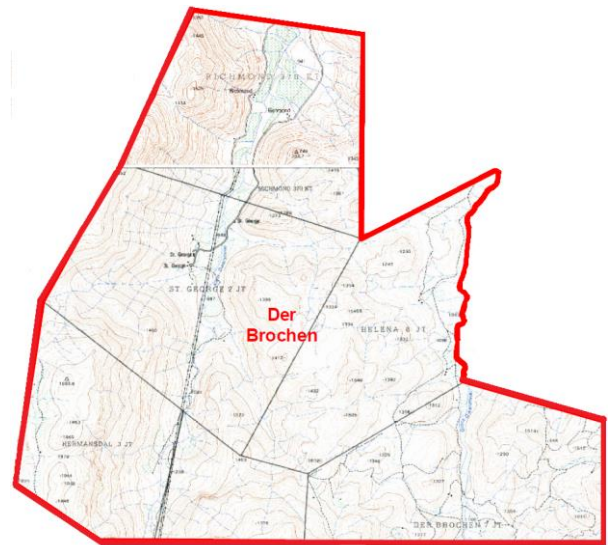


Figure 2: Der Brochen Mine's Mining Right

Existing facilities and activities:

- The Mototolo Concentrator;
- The Helena TSF with two associated Return Water Dams (RWDs);
- Mine offices (old farm house) and access roads;
- Prospecting activities comprising of site preparation, drilling of prospecting boreholes, site rehabilitation and monitoring;
- Trial mining area on the Richmond farm (activity is completed, and the soil stockpile and waste rock dump are well vegetated);
- Abstraction of groundwater in support of mining from the Helena and Richmond licenced wellfields; and
- Abstraction from Der Brochen Dam based on an existing lawful industrial allocation.

Activities previously authorised, but which have not yet commenced:

- The Helena and Richmond wellfields (only two of the authorised boreholes per wellfield currently in use);
- Helena and Richmond shafts and associated waste rock dumps;
- Two Open Pits (Northern and Southern Pits) and associated waste rock/overburden dumps and pollution control dam;
- Re-routing of a 132 kV powerline; and
- A Co-Disposal Facility (tailings disposal with a rock embankment in the north pit).

Authorised activities under construction:

- Mareesburg TSF and associated Return Water Dams (RWDs); and
- Mareesburg tailings-return water pipeline system to Mototolo Concentrator.

Der Brochen Amendment Project



Integrated Environmental Authorisation

Before RPM may commence with the development of the additional mining related activities, the following environmental authorisations processes and licence amendment need to be undertaken in accordance with the relevant national legislation:

- A Scoping and Environmental Impact Assessment (EIA) for any project related Listed Activities stipulated in the National Environmental Management Act (Act No. 107 of 1998) (NEMA) and the National Environmental Management: Waste Act (Act No. 59 of 2008) (NEM:WA). The Der Brochen Mine's existing Environmental Management Programme (EMPr) will be amended in terms of the Mineral and Petroleum Resources Development Act (Act No. 28 of 2002) (MPRDA). The Scoping, EIA and amended EMPr will be submitted to Limpopo Province's DMR for approval; and
- An updated Integrated Water Use Licence (IWUL) for any project related water uses and accompanying Integrated Water and Waste Management Plan (IWWMP) under the National Water Act (Act No. 36 of 1998) (NWA), for submission and approval from the Department of Water and Sanitation (DWS).

RPM appointed SRK Consulting (South Africa) (SRK) as the independent Environmental Assessment Practitioner (EAP) to manage and facilitate the integrated environmental authorisation and associated public participation process in accordance with NEMA, NEM:WA, NWA and MPRDA.

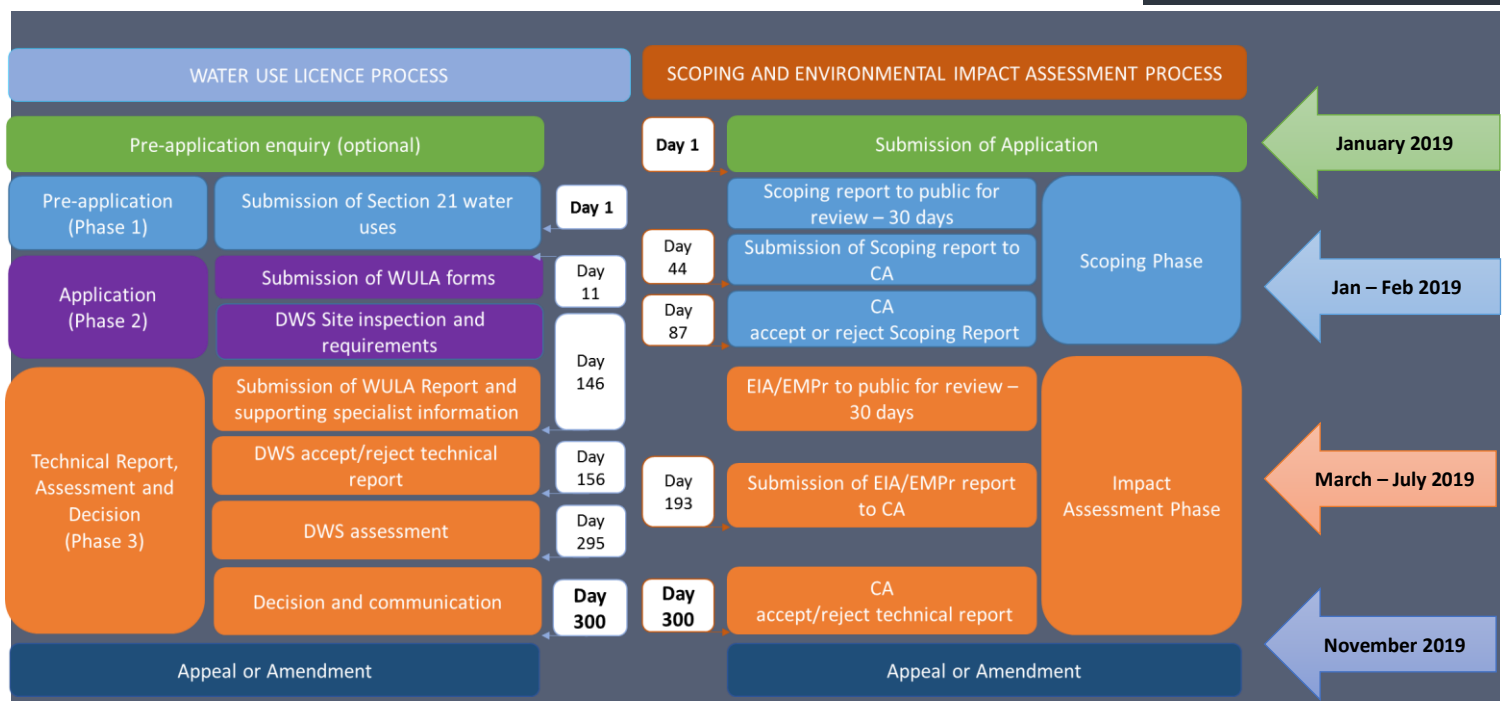
The authorisation processes will run concurrently and require the involvement of stakeholders. Therefore, a single integrated public participation process will be undertaken in compliance with all legislative requirement. The integrated environmental authorisation process, timeframes and associated public participation process are illustrated in the below.

During Scoping phase

Issues for investigation during the impact assessment phase are identified and the scope of specialist studies defined. This information will be compiled into a Scoping Report that will be available for public comment for a 30 calendar day period. After the public commenting period the report will be updated to address any comments received where after it will be submitted to the DMR for consideration.

During EIA phase

Potential impacts are determined and management measures are proposed to mitigate negative impacts and enhance positive impacts. The EIA, including all specialist reports and associated EMPr will also be made available for public comment for a 30 calendar day period, then updated with comments received and submitted to the DMR for decision-making.





SPECIALISTS

Studies to be undertaken as part of the EIA:

- Air Quality;
- Biodiversity (Aquatic and Terrestrial Ecology);
- Groundwater;
- Heritage and Archaeology;
- Noise and Vibration;
- Soils, Land Use and Land Capability;
- Surface Water;
- Traffic;
- Visual;
- Rehabilitation and Closure.

PROJECT RELATED LISTED ACTIVITIES AND WATER USES

A summary of the potential listed activities and water uses, associated with the expansion project, which will be applied for in terms of the above legislation is provided below:

NEMA Environmental Authorisation - Scoping and EIA Process	
Listing notice 1 (GN R 983) Activity and description:	Listing notice 2 (GN R 984) Activity and description:
10 The development and related operation of infrastructure exceeding 1 000 metres in length for the bulk transportation of sewage, effluent, process water, waste water, return water, industrial discharge or slimes. 11 The development of facilities or infrastructure for the transmission and distribution of electricity. 12 The development of infrastructure exceeding 100 m ² in a watercourse or within 32 metres of a watercourse, measured from the edge of a watercourse. 14 The development of facilities or infrastructure for the storage, or for the storage and handling, of a dangerous good, with a combined capacity of 80 m ³ but not exceeding 500 m ³ . 19 The infilling or depositing of any material of more than 10 m ³ into, or the dredging, excavation, removal or moving of soil, sand, shells, shell grit, pebbles or rock of more than 10 m ³ from a watercourse. 24 The development of a road with a reserve wider than 13.5 m, or where no reserve exists where the road is wider than 8 m. 30 Any process or activity identified in terms of section 53(1) of the National Environmental Management: Biodiversity Act, 2004 (Act No. 10 of 2004). 56 The widening of a road by more than 6 metres, or the lengthening of a road by more than 1 kilometre.	6 The development of facilities or infrastructure for any process or activity which requires a permit or licence or an amended permit or licence in terms of national or provincial legislation governing the generation or release of emissions, pollution or effluent. 11 The development of facilities or infrastructure for the transfer of 50 000 cubic metres or more water per day, from and to or between (iii) impoundments. 15 The clearance of an area of 20 hectares or more of indigenous vegetation. 17 Any activity including the operation of that activity which requires a mining right as contemplated in section 22 of the MPRDA.
	Listing notice 3 (GN R 985)
	2 The development of reservoirs. 4 The development of a road wider than 4 meters with a reserve of less than 13.5m. 5 The development of hospitality facilities that sleep less than 15 people. 8 The development and related operation of above ground cableways and funiculars. 10 The development and related operation of facilities or infrastructure for the storage, or storage and handling of a dangerous good, where such storage occurs in containers with a combined capacity of 30m ³ but not exceeding 80m ³ . 12 The clearance of an area of more than 300m ² or more of indigenous vegetation.
NEM:WA – Waste Management Licence (Category B (GN R 921) - Requiring a Scoping and EIA)	NWA- Section 21 Water Use Licence Requiring a Water Use Licence Application
10 The construction of a facility for a waste management activity listed in Category B of this Schedule (not in isolation to associated waste management activity). 11 The establishment or reclamation of a residue stockpile or residue deposit resulting from activities which requires a mining right, exploration right or production right in terms of MPRDA.	(a) Taking of water from a water resource. (b) Storage of water. (c) Impeding or diverting the flow of water in a watercourse. (g) Disposing of waste or water containing waste in a manner which may detrimentally impact on a water resource. (i) Altering the bed, banks, course or characteristics of a watercourse. (j) Removing, discharging or disposing of water found underground if it is necessary for the efficient continuation of an activity or for the safety of people.

Der Brochen Amendment Project

HOW YOU CAN BE INVOLVED?

The public participation process, undertaken as part of the environmental authorisation process, is conducted in terms of NEMA's EIA Regulations of 2014 (as amended) which provides clear guidelines for stakeholder engagement during an environmental authorisation process.

The process offers stakeholders the opportunity to be informed about the project, raise comments or queries and make suggestions for enhanced project benefits. The technical specialists and project team will evaluate relevant issues and suggestions during the EIA process.

Public Participation

You are receiving this document as we have identified you as a potential interested and affected party (I&AP) for this project. If you wish to remain an I&AP for this new authorisation process, you are invited to register as a stakeholder (registration form attached) and comment on the proposed project or raise any issue of concern. Please also contact us should you require more information on the proposed Der Brochen Amendment Project or the associated environmental authorisation process.

Availability of the Scoping Report for Public Comment

As part of the integrated environmental authorisation process associated with the Der Brochen Amendment Project, the required Scoping Report is now available for public review and comment. The Scoping Report describes the proposed project related activities, any feasible and reasonable alternatives that were considered to date, a description of the property and the environment that may be affected and the manner in which the biological, social, economic and cultural aspects of the environment may potentially be impacted by the proposed project. The Scoping Report also includes the Plan of Study for the EIA (next phase), specifying the methodology to be used to assess the potential impacts, and the specialists investigations that are required.

The Scoping Report is available for public review and comment for a period of thirty (30) calendar days from Friday, 25 January 2019 to Monday, 25 February 2019.

The Scoping Report will be available in PDF format on the SRK website (<https://www.srk.co.za/en/library/za-public-documents>), and the following public places:

Public places where the Scoping Report will be made available

Public Place	Locality	Tel No
Mapodile/Eerstegeluk Public Library	735 Kgahlanong Street, Mapodile	013 237 0039
Burgersfort Public Library	Cnr Kort & Eddie Sedibe Str, Burgersfort	013 231 7815
Kalkfontein CPA offices	Kalkfontein (Nokaneng)	No Landline
Pakaneng Community Trust Office	Schaapkraal Farm	No Landline
Gamawela Community Centre	St George Farm	No Landline

All stakeholders are encouraged to comment on the Scoping Report by Monday, **25 February 2019**, as your comments and suggestions on any aspect of the project will ultimately assist the relevant authorities to make an informed decision.

You are welcome to comment on the Scoping Report by:

- Completing the enclosed Registration and Comment Form and submitting it to the SRK Stakeholder Engagement Office;
- Writing a letter or additional written submission by mail, email, or fax;
- Attending stakeholder meetings, details of which will be communicated to registered I&APs; and
- Contacting the Stakeholder Engagement Office.

CONTACT US

Should you have any questions, need more information, or wish to raise issues of concern or suggestions, please contact SRK's Stakeholder Engagement Office

Ms Aphiwe-Zona Dotwana
Stakeholder Engagement Office
SRK Consulting, P. O. Box 55291, Northlands, 2116
Tel: (011) 441 6105
Fax: 086 503 6825
E-mail: adotwana@srk.co.za

 **srk consulting**